

May 16-1902

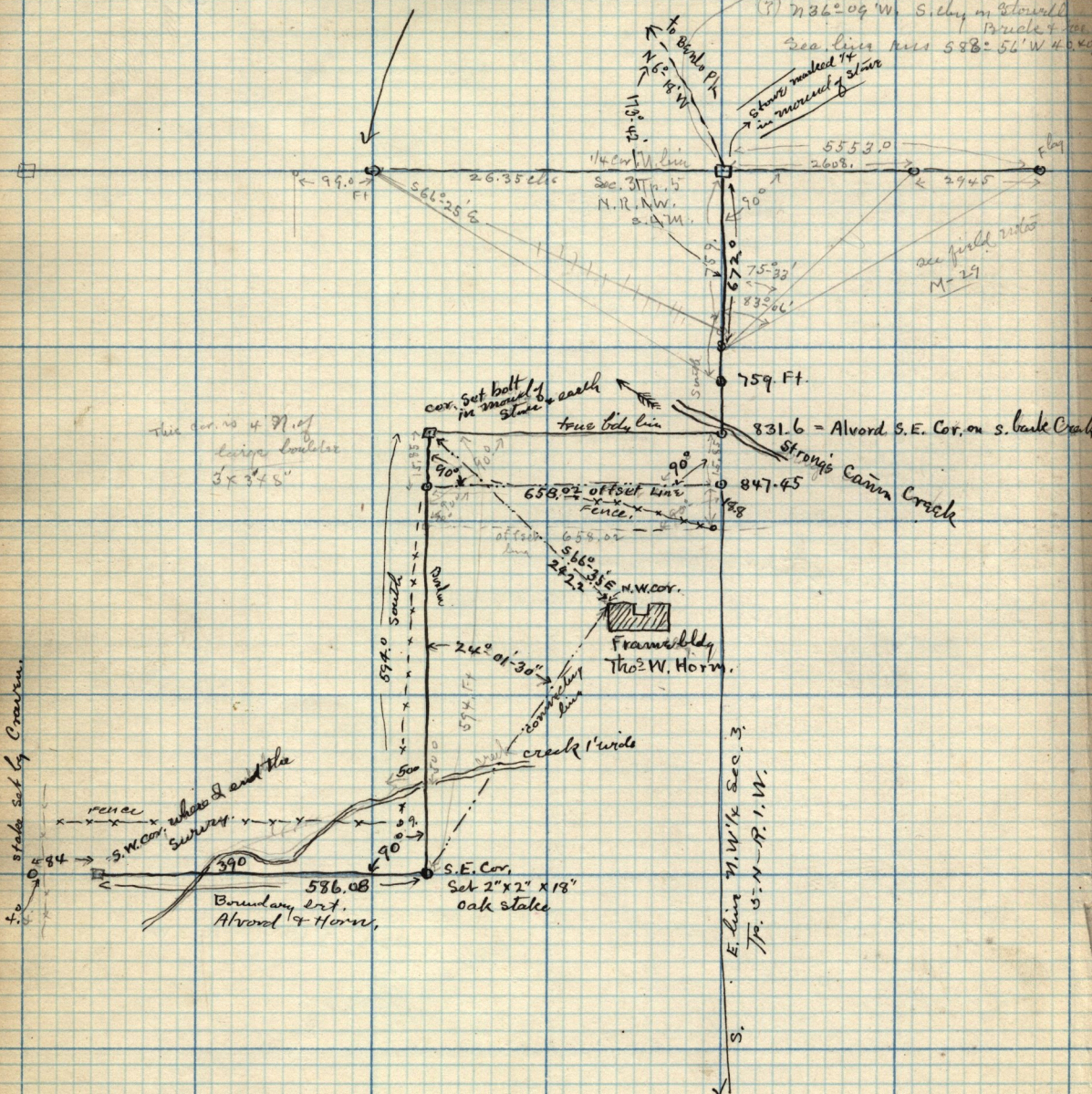
Survey of all that part of the boundary of Lot F.T. Alvord and Tho^s W. Horn in Sec. 3. Tp. 5. N. R. 1. W. S. 1. Meridian.

I surveyed the

N 42° 34' W line Brule, 712° 51' S, 384° 40' S, " Envir, " Obsty Ph.

these bearings to be verified

(?) N. 92° 26' E Erie reference of 716° 18' W to Brule Pk. = part of a 2151° 29' W common line (?) N. 86° 09' W. S. line on Edward Brule & sea line has 588° 56' W 49.



this cor. no 4 31 of line located 3 x 34 S

cor. set bolt in mark of stake

true bed line

off set line

Fence

N.W. cor.

Frameably Tho^s W. Horn

crack 1' wide

S.E. Cor. Set 2" x 2" x 18" oak stake

Boundary bet. Alvord & Horn,

renee s.w. cor. where I end the survey

stake set by Crocker

S. E. line 21 W 1/4 Sec. 3. Tp. 5. N. R. 1. W.

see field notes M-29

831.6 = Alvord S.E. Cor. on s. bank Cracks

847.45

658.02

658.02

586.08

586.08

586.08

586.08

586.08

586.08

586.08

586.08

586.08

586.08

586.08

586.08

586.08

586.08

586.08

586.08